

Monthly Weather Summary in Thailand

March 2021

In March 2021, the heat low pressure cell mainly covered upper Thailand during the middle and the end of the month, causing hot weather in most areas of Thailand during that time with very hot weather in many areas of the northern part and in some areas of the northeastern and central parts. The average monthly temperature in this month was higher than normal in all parts. However, due to the influence of the high pressure area from China extending its ridge to cover the northeastern part and the South China Sea during the beginning of the month, the periodically prevailing of the southerly and southeasterly wind which brought moisture from the South China Sea and the Gulf of Thailand to upper Thailand and the passage of the westerly trough over the northern and upper northeastern part during late month caused unseasonable rainfall with thunderstorm and gusty wind in many areas and temperature relatively decreased at that time. For southern part, the easterly wind which prevailed over the Gulf of Thailand and the southern part mostly weak, less rainfall was observed in the southern Thailand with hot weather especially along the west coast. However, due to the strengthened of the easterly wind during late month with the covering of the active low pressure cell over the Andaman Sea caused increasing rainfall in southern part at that time. Monthly rainfall was below normal in all parts of the country i.e. northern part 10.7 mm (38%), northeastern part 5.2 mm (12%), central part 14.9 mm (41%), eastern part 1.2 mm (2%) southern part (east coast) 27.4 mm (40%) and southern part (west coast) 32.6 mm (37%). The average total rainfall over Thailand in this month was lower than normal 13.3 mm (27%).

1 – 10 March: Heat low pressure cell covered upper Thailand during the middle of the period causing hot weather in almost areas of the northern, central and upper eastern parts with very hot weather in some areas of the northern part with extremely hot of 40.3 °C at Amphoe Mueang in Tak province on March 6. However, the high pressure areas from China extended its ridge to cover the northeastern part and the southern China Sea during early period and the another high pressure areas extended its ridge to dominate the mentioned areas during late period in addition with the southerly and the southeasterly wind prevailed over lower northern, northeastern, central and eastern parts almost the period. These caused rainfall in upper Thailand especially in the northeastern and eastern parts that received isolated to scattered rain almost the period with heavy to very heavy rainfall in some areas while the northern and central part obtained scanty rain for few days with isolated heavy to very heavy rainfall on March 3. The maximum daily rainfall of 165.7 mm was recorded at Sri Samrong in Sukhothai province on March 3. Thunderstorms with gusty wind was observed at Si Sa Ket, Udon Thani and Prachin Buri provinces on March 2 and at Sukhothai, Pichit, Phrae, Kamphaeng Phet, Nakhon Ratchasima and Uthai Thani provinces on March 3 and at Phetchabun, Nong Khai, Nong Bua Lam Phu, Nakhon Phanom, Khon Kaen, Kalasin, Chaiyaphum and Udon Thani provinces on March 5 and at Kamphaeng Phet, Loei, Nong Bua Lam Phu, Sakon Nakhon, Khon Kaen, Maha Sarakham, Roi Et, Yasothon, Buriram, Nakhon Ratchasima, Kalasin, Ubon Ratchathani, Nakhon Sawan and Chachoengsao provinces on March 7 and at Phisanulok, Chai Nat, Suphan Buri, Saraburi, and Prachin Buri provinces on March 8 and at Nakhon Sawan, Sing Buri and Kanchanaburi provinces on March 9 and at Nakhon Nayok, Chachoengsao, Chanthaburi and Trat provinces on March 10. For southern part, the easterly wind prevailed over the Gulf of Thailand and Southern part that caused isolated to scattered rain during the middle of the period with heavy rainfall in some areas along the east coast whereas isolated rain for few days along the west coast. The highest daily rainfall in southern part was 49.2 mm at Yi-Ngo in Narathiwat province on March 6.

11 – 20 March: The heat low pressure cell covered upper Thailand almost the whole period. It mainly covered the northern and upper central parts and the southerly and the southeasterly wind prevailed over lower northern, northeastern, central and eastern parts almost the period. These caused hot weather in almost areas of upper Thailand especially during the second half of the period that experienced generally hot weather with very hot weather in some areas of the northern and central parts. The highest maximum temperature was 42.0 °C at Thoen in Lampang province and at Amphoe Mueang in Tak province on March 20. For Rainfall, isolated rain with heavy rainfall in some areas was observed for few days in upper Thailand with the highest daily rainfall of 70.5 mm at Dan Sai in Loei province on March 13. Thunderstorm with gusty wind was observed at Phitsanulok province on March 11 and at Phitsanulok, Lampang, Chon Buri and Rayong provinces on March 12 and at Phayao, Sakon Nakhon, Kalasin, Maha Sarakham, Mukdahan, Chaiyaphum and Nakhon Ratchasima provinces on March 20. Gusty wind was reported at Pathum Thani on March 14 and at Phitsanulok, Surin, Nakhon Ratchasima and Nakhon Sawan on March 17. In southern part, isolated rain was found during early period due to the prevailing of the easterly wind over the Gulf of Thailand and southern part. The heaviest daily rainfall was 38.8 mm at Sukirin in Narathiwat province on March 12 with the occurrence of thunderstorm and gusty wind at Phang-nga province on March 12.

21 – 31 March: The heat low pressure cell covered upper Thailand almost the period and the southerly and the southeasterly wind prevailed over lower northern, northeastern, central and eastern parts causing hot weather in almost areas of upper Thailand with very hot weather in many areas of the northern and in some areas of the northeastern and central parts. The highest maximum temperature was 42.4 °C at Amphoe Mueang in Tak province on March 21. However, the high pressure area from China extended its ridge to cover upper Thailand and the South China Sea during early period coupled with the passage of the westerly trough over the northern and northeastern parts led to unusual rainfall in upper Thailand during that time with thunderstorm and gusty wind in several places. The maximum daily rainfall in upper Thailand was 83.2 mm at Kusuman in Sakon Nakhon province on March 21. Gusty wind was reported at Chiang Mai, Nan, Phitsanulok, Phichit, Phetchabun, Uttaradit, Tak, Loei, Bung Kan, Udon Thani, Nakhon Phanom, Nong Bua Lam Phu, Nong Khai, Khon Kaen, Roi Et, Yasothon, Surin, Si Sa Ket and Ubon Ratchathani provinces on March 21 and at Mae Hong Son, Chiang Mai, Lampang, Ratchaburi, Chanthaburi and Samut Sakhon provinces on March 22 and at Chiang Mai on March 23 and at Mae Hong Son, Chiang Rai and Chaing Mai provinces on March 24 and at Nan and Uttaradit provinces on March 25 and at Nan, Chiang Rai, Lampang, Lamphun, Phrae, Phayao and Tak provinces on March 26 and at Kamphaeng Phet, Phetchabun, Loei, Chaiyaphum and Nong Bua Lam Phu provinces on March 27 and at Nan, Kamphaeng Phet, Nong Khai, Bung Kan, Udon Thani, Sakon Nakhon and Uthai Thani provinces on March 28 and at Nan, Kamphaeng Phet, Loei and Nong Bua Lam Phu provinces on March 29 and at Sakon Nakhon, Udon Thani and Khon Kaen provinces on March 30 and at Sa Kaeo and Chon Buri provinces on March 31. For southern part, rainfall was relatively increased by the moderate easterly wind prevailing over the Gulf of Thailand and southern part and the active low pressure cell covering the Andaman Sea during late period. Scattered to fairly widespread rain was found almost the period with heavy to very heavy rainfall in some areas along the east coast while fairly widespread rain with isolated heavy to very heavy rainfall was mainly observed during late period along the west coast. The heaviest daily rainfall was 131.0 mm at Cho-airong in Narathiwat province on March 26.

Note : Rainfall, temperatures and natural disasters in this report were updated up to April 2, 2021.

Climatological Center, Meteorological Development Division
Thai Meteorological Department

Monthly Current Report
Rainfall and Accumulative Rainfall
March 2021

Northern Thailand

Station	Temperature (°c)		Rainfall (mm)		Accumulative rainfall (mm) Since 1 January	
	Mean	Above or below normal	Actual	Above or below normal	Actual	Above or below normal
Chiang Rai	25.7	1.1	0.2	-28.0	87.6	38.1
Mae Hong Son	27.4	0.7	0.0	-16.8	20.4	-8.8
Phayao	28.2	1.8	0.1	-30.1	75.9	30.8
Chiang Mai	28.6	1.5	9.4	-8.4	37.1	6.2
Tha Wang Pha	27.1	1.2	64.5	31.0	96.1	46.6
Nan	28.4	1.6	19.1	-13.6	47.1	-1.9
Lamphun	28.6	0.9	0.0	-13.1	43.6	22.8
Lampang	30.1	2.1	2.1	-20.7	22.2	-12.2
Mae Sariang	28.0	2.0	0.0	-14.2	1.8	-20.4
Phrae	29.8	1.9	0.3	-27.3	6.9	-35.3
Uttaradit	30.3	1.6	4.8	-18.6	15.5	-27.9
Bhumibol Dam	30.8	1.1	11.1	-10.0	16.2	-14.4
Tak	31.5	1.3	2.0	-10.1	8.6	-14.3
Mae Sot	29.2	2.0	0.2	-15.3	4.6	-20.8
Umphang	25.9	1.5	84.7	36.8	89.9	26.1
Phitsanulok	29.9	0.7	42.7	16.0	71.7	27.6
Lom Sak	29.5	1.5	15.3	-28.5	24.4	-41.3
Phetchabun	30.5	1.8	2.9	-45.0	26.3	-43.3
Wichian Buri	30.4	0.9	41.7	-8.9	47.8	-23.1
Kamphaeng Phet	30.3	1.6	46.3	9.6	49.0	-3.1
Over the area	29.0	1.4	17.4	-10.7 -38%	39.6	-3.5 -8%

Northeastern Thailand

Station	Temperature (°c)		Rainfall (mm)		Accumulative rainfall (mm) Since 1 January	
	Mean	Above or below normal	Actual	Above or below normal	Actual	Above or below normal
Nong Khai	29.1	1.5	76.5	36.7	103.3	37.9
Loei	28.0	1.1	50.4	11.1	78.0	16.4
Udon Thani	28.7	0.7	9.2	-40.5	49.6	-28.4
Nakhon Phanom	28.2	1.2	49.8	-10.3	80.7	-13.4
Sakon Nakhon	27.8	0.6	84.3	26.8	105.9	14.4
Mukdahan	29.1	1.4	8.3	-30.5	15.5	-44.4
Khon Kaen	28.5	0.0	92.3	50.2	113.7	46.2
Kosum Phisai	28.9	0.5	65.9	14.1	79.0	8.7
Roi Et	29.4	1.2	73.8	32.6	100.7	36.7
Chaiyaphum	29.8	1.0	38.1	-13.2	51.2	-18.9
Ubon Ratchathani	30.0	1.1	8.2	-22.3	15.5	-32.4
Tha Tum	29.2	0.5	0.0	-44.2	30.6	-34.8
Surin	29.9	1.2	32.9	-12.7	79.6	16.9
Nakhon Ratchasima	30.1	1.2	19.6	-17.5	32.8	-28.6
Chok Chai	29.6	1.1	4.4	-33.1	23.7	-32.6
Nang Rong	29.0	0.6	18.4	-29.5	41.2	-31.0
Over the area	29.1	0.9	39.5	-5.2 -12%	62.6	-5.4 -8%

- NOTES :
- 1) Mean temperature is the average of daily dry-bulb temperature
 - 2) "T" is trace, rainfall amount less than 0.1 mm.
 - 3) "blank" is incomplete data.
 - 4) Temperature and rainfall are preliminary data.

Monthly Current Report
Rainfall and Accumulative Rainfall
March 2021

Central Thailand

Station	Temperature (°c)		Rainfall (mm)		Accumulative rainfall (mm) Since 1 January	
	Mean	Above or below normal	Actual	Above or below normal	Actual	Above or below normal
Nakhon Sawan	31.8	1.6	1.0	-32.1	9.4	-39.9
Bua Chum	30.5	1.0	12.2	-33.6	39.4	-22.2
Lop Buri	30.8	1.3	11.4	-20.7	11.6	-33.1
Suphan Buri	30.3	1.3	4.3	-14.6	37.4	7.9
Thong Pha Phum	29.7	0.9	55.3	8.9	55.9	-12.3
Kanchanaburi	30.6	0.9	54.4	25.4	60.5	10.0
Bangkok Airport	30.2	0.7	13.6	-26.8	13.6	-47.2
Bangkok Metropolis	30.0	0.5	16.9	-25.2	97.6	22.2
Over the area	30.5	1.0	21.1	-14.9 -41%	40.7	-14.3 -26%

Eastern Thailand

Station	Temperature (°c)		Rainfall (mm)		Accumulative rainfall (mm) Since 1 January	
	Mean	Above or below normal	Actual	Above or below normal	Actual	Above or below normal
Prachin Buri	30.5	1.0	9.8	-40.1	17.9	-55.5
Kabin Buri	29.5	0.4	24.5	-27.0	64.7	-20.7
Aranyaprathet	30.3	0.7	49.6	-2.8	49.6	-35.8
Chon Buri	29.6	0.4	121.7	74.2	125.3	53.6
Ko Sichang	28.8	0.1	5.8	-43.8	14.8	-61.4
Pattaya	28.3	0.1	41.4	-11.9	121.4	38.2
Sattahip	28.6	0.0	79.3	20.5	153.5	49.7
Rayong	29.0	0.0	89.7	19.4	138.1	10.6
Chanthaburi	28.7	0.6	112.7	40.8	227.0	100.0
Khlong Yai	28.6	0.7	74.2	-41.1	109.2	-129.3
Over the area	29.2	0.4	60.9	-1.2 -2%	102.2	-5.1 -5%

- NOTES :
- 1) Mean temperature is the average of daily dry-bulb temperature
 - 2) "T" is trace, rainfall amount less than 0.1 mm.
 - 3) "blank" is incomplete data.
 - 4) Temperature and rainfall are preliminary data.

Monthly Current Report
Rainfall and Accumulative Rainfall
March 2021

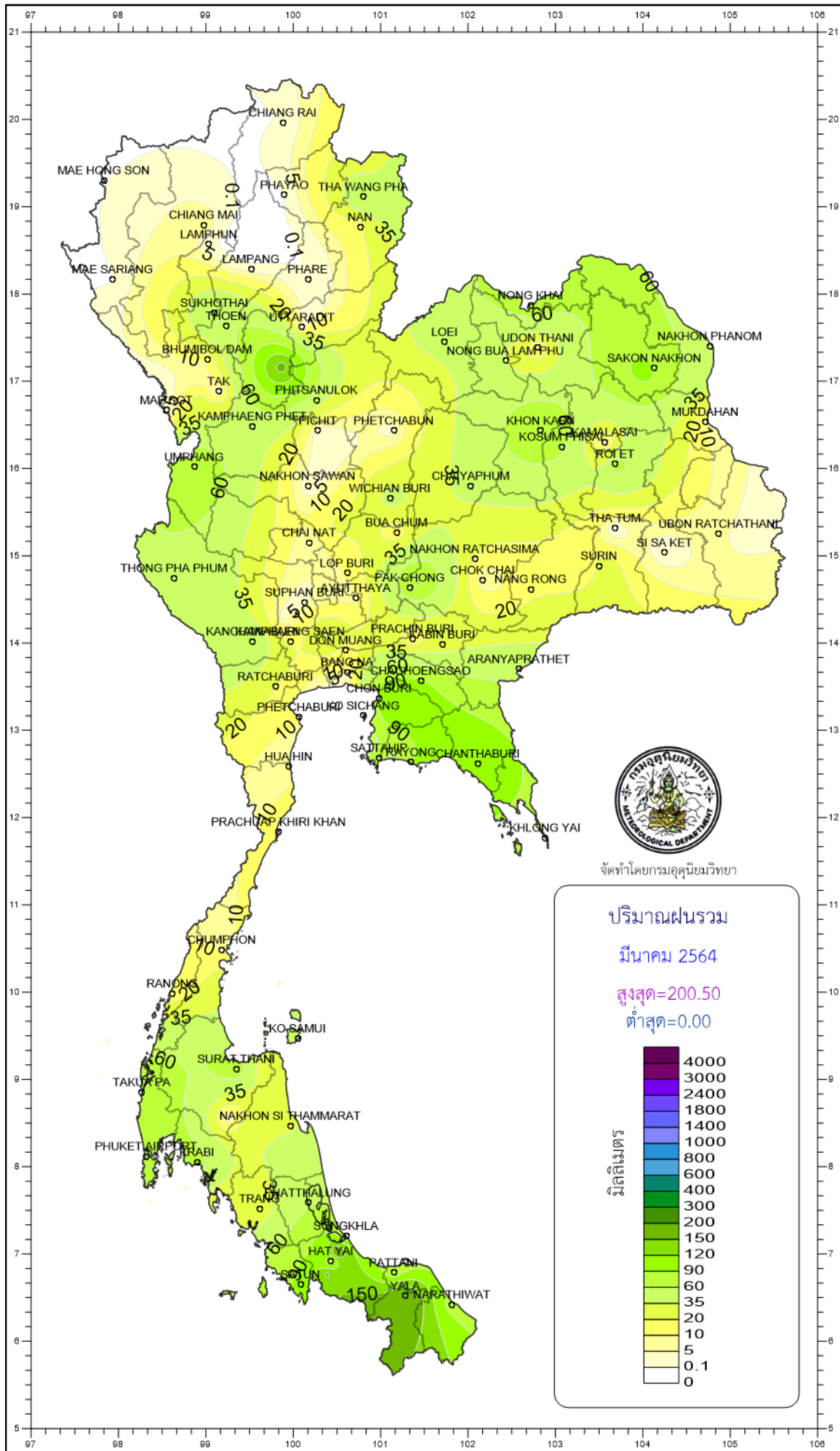
Southern Thailand, east coast

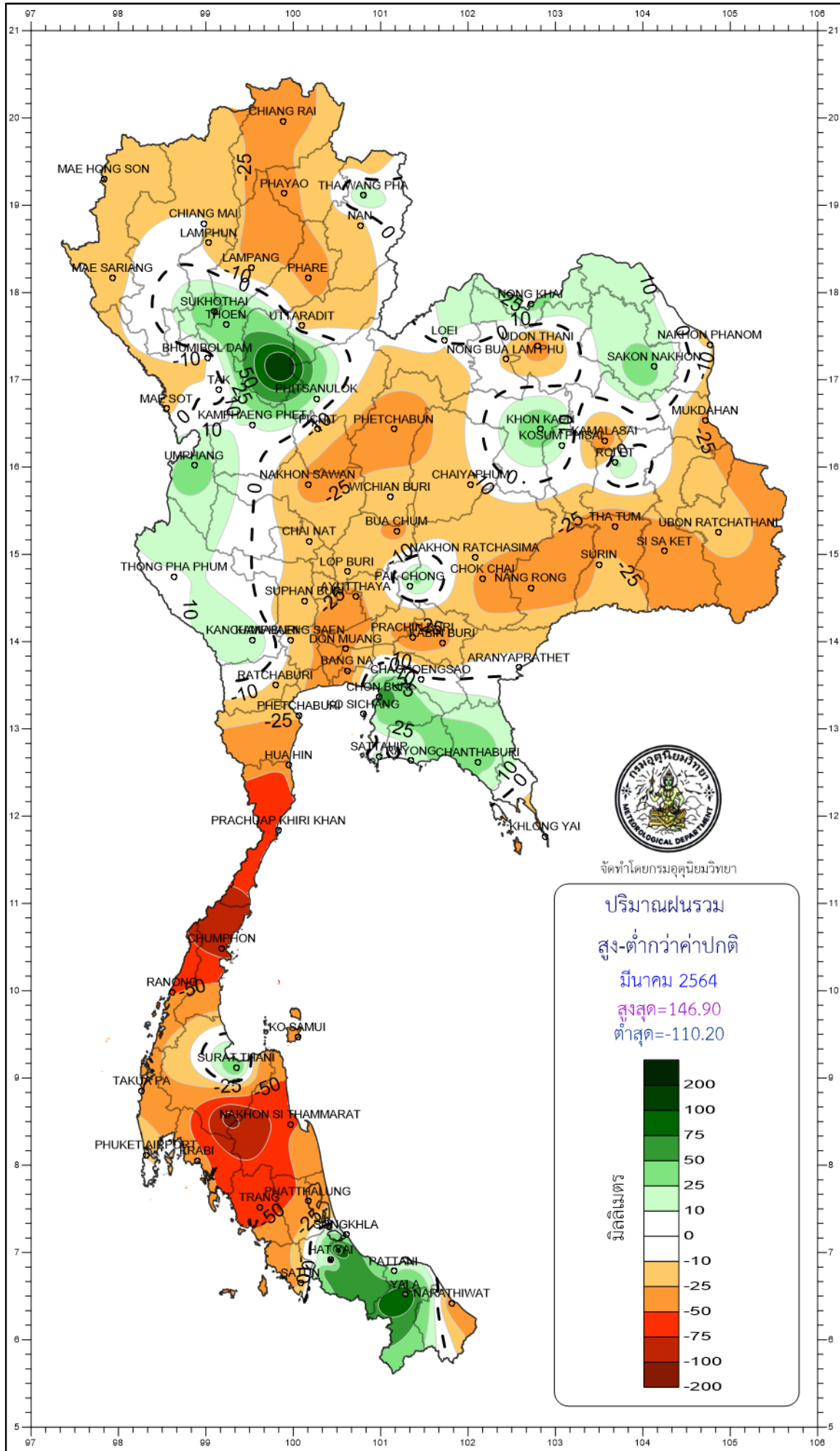
Station	Temperature (°c)		Rainfall (mm)		Accumulative rainfall (mm) Since 1 January	
	Mean	Above or below normal	Actual	Above or below normal	Actual	Above or below normal
Phetchaburi	28.8	0.3	10.4	-22.7	29.4	-19.0
Hua Hin	28.9	0.5	5.4	-48.5	48.2	-32.8
Prachuap Khiri Khan	28.6	0.7	12.5	-59.3	77.1	-40.9
Chumphon	28.2	0.4	7.7	-89.5	39.0	-162.3
Surat Thani	27.9	0.4	75.6	51.6	96.2	23.1
Ko Samui	28.4	0.2	40.6	-40.2	96.2	-125.2
Nakhon Si Thammarat	27.7	0.3	26.6	-63.1	151.9	-151.4
Songkhla	28.3	0.2	65.9	6.2	180.0	-3.1
Hat Yai Airport	27.7	0.1	63.0	-12.1	221.0	67.7
Pattani Airport	27.8	0.5	69.6	20.2	203.6	71.3
Narathiwat	27.9	0.6	73.7	-43.7	283.0	10.3
Over the area	28.2	0.4	41.0	-27.4 -40%	129.6	-33.0 -20%

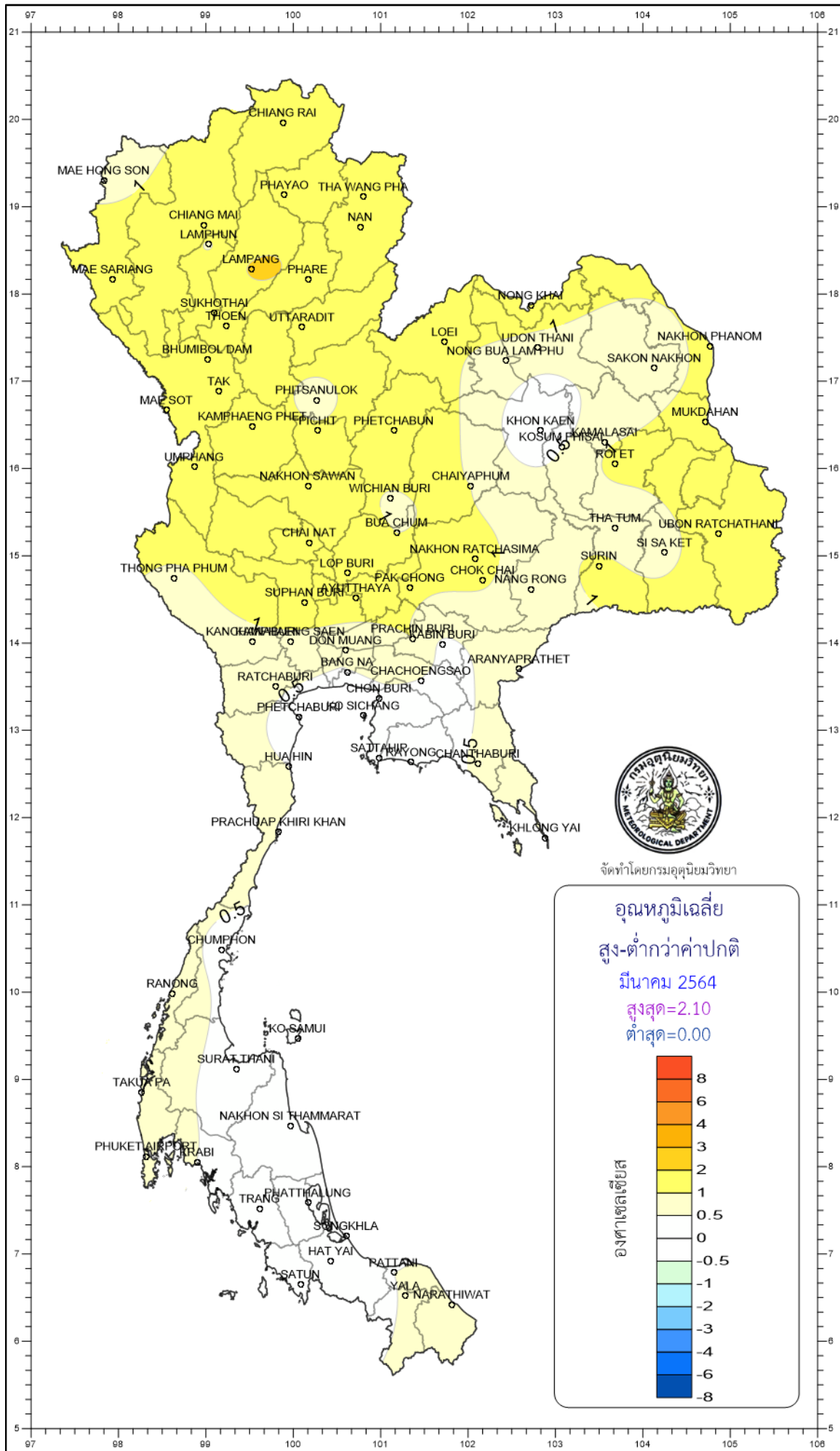
Southern Thailand, west coast

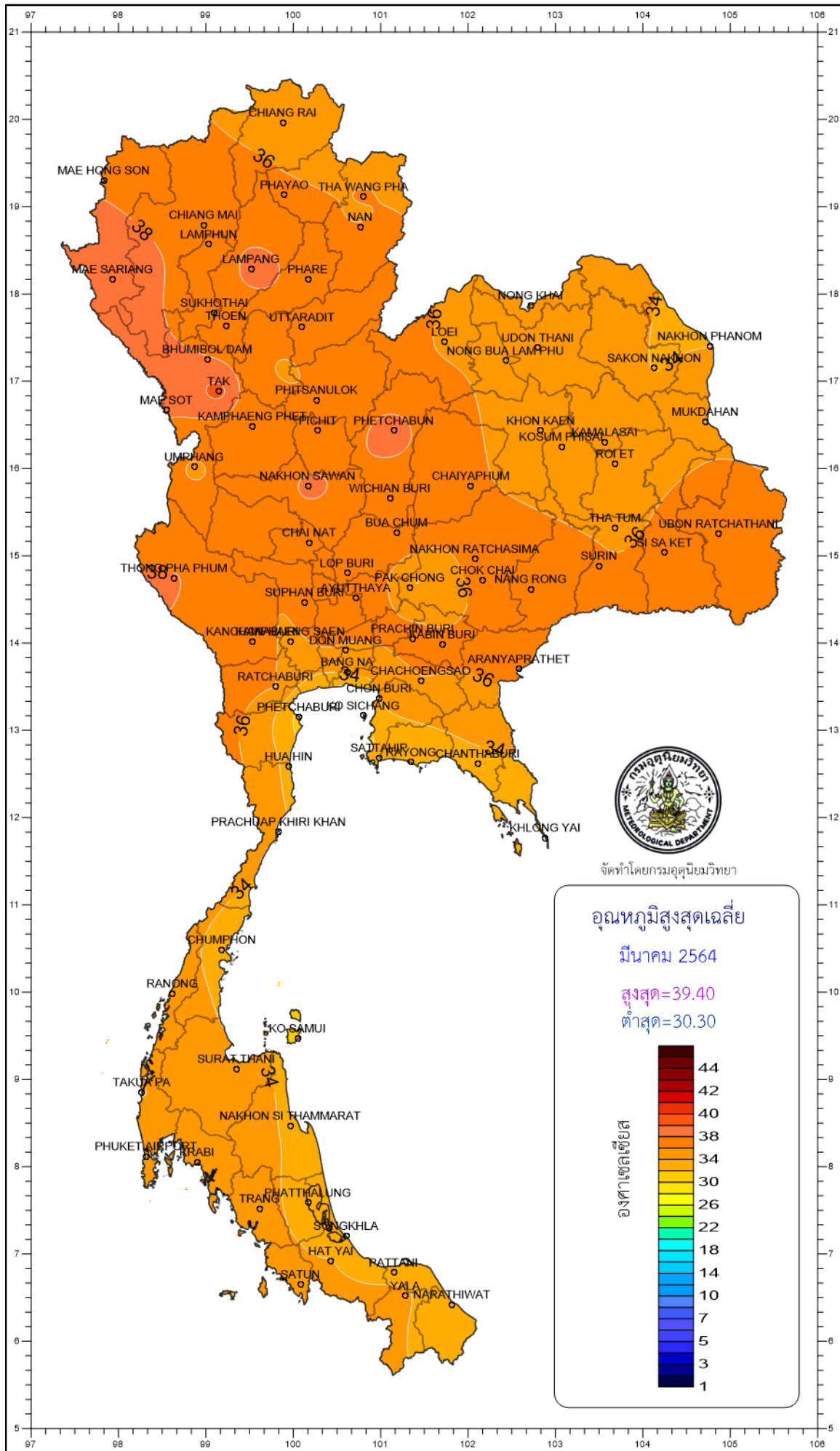
Station	Temperature (°c)		Rainfall (mm)		Accumulative rainfall (mm) Since 1 January	
	Mean	Above or below normal	Actual	Above or below normal	Actual	Above or below normal
Ranong	29.1	0.7	13.5	-51.7	16.0	-75.2
Takua Pa	28.3	0.6	83.8	-30.8	131.0	-64.1
Phuket	30.2	1.0	67.8	-5.7	109.8	-17.9
Phuket Airport	29.0	0.7	89.2	-11.1	112.0	-51.7
Ko Lanta	28.9	0.1	19.5	-43.0	34.6	-60.8
Trang Airport	28.6	0.5	23.4	-60.0	67.2	-69.5
Satun	28.7	0.3	96.0	-26.0	122.6	-66.4
Over the area	29.0	0.6	56.2	-32.6 -37%	84.7	-58.0 -41%

- NOTES :
- 1) Mean temperature is the average of daily dry-bulb temperature
 - 2) "T" is trace, rainfall amount less than 0.1 mm.
 - 3) "blank" is incomplete data.
 - 4) Temperature and rainfall are preliminary data.









อุณหภูมิสูงสุดเฉลี่ย

มีนาคม 2564

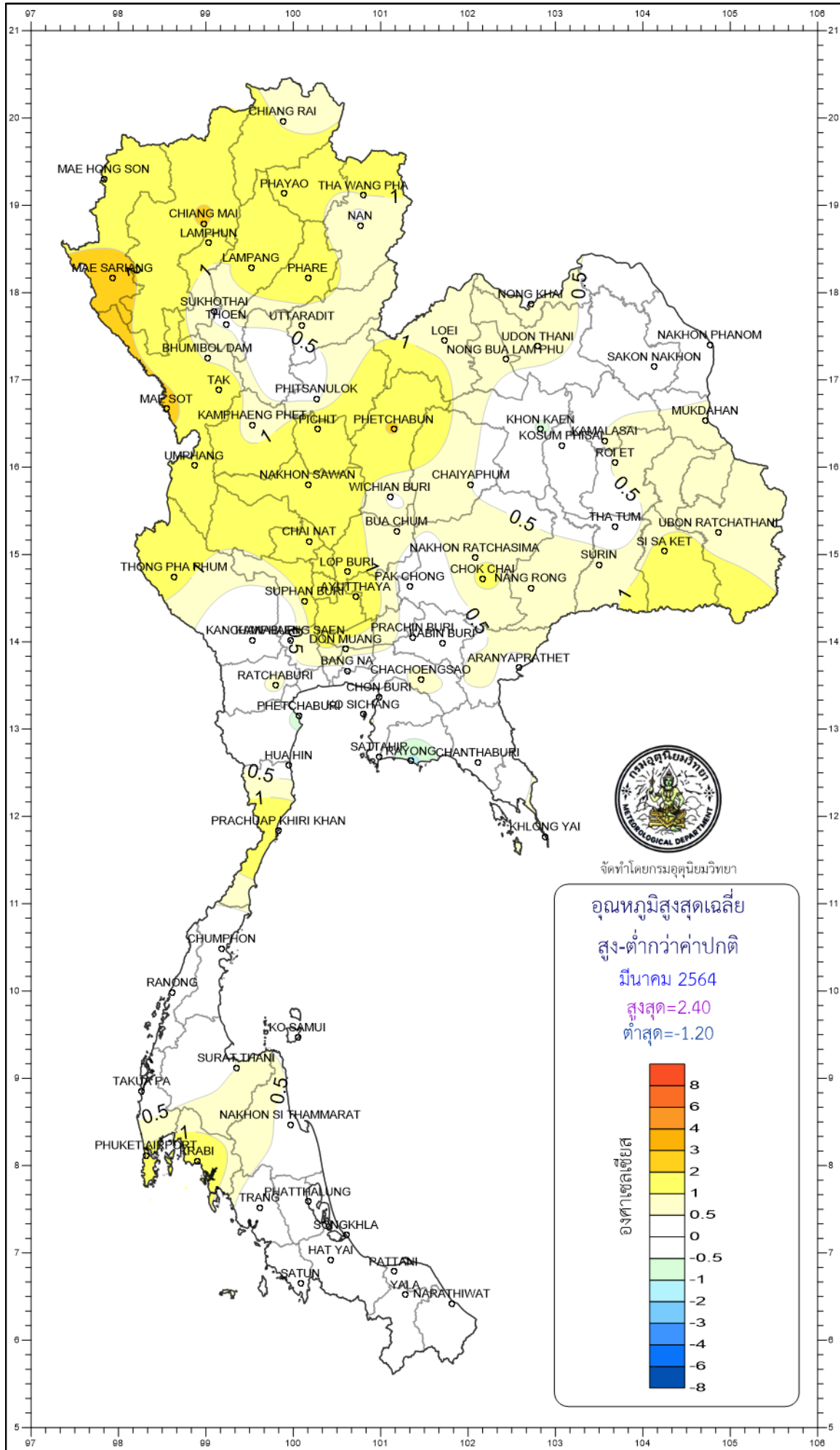
สูงสุด=39.40

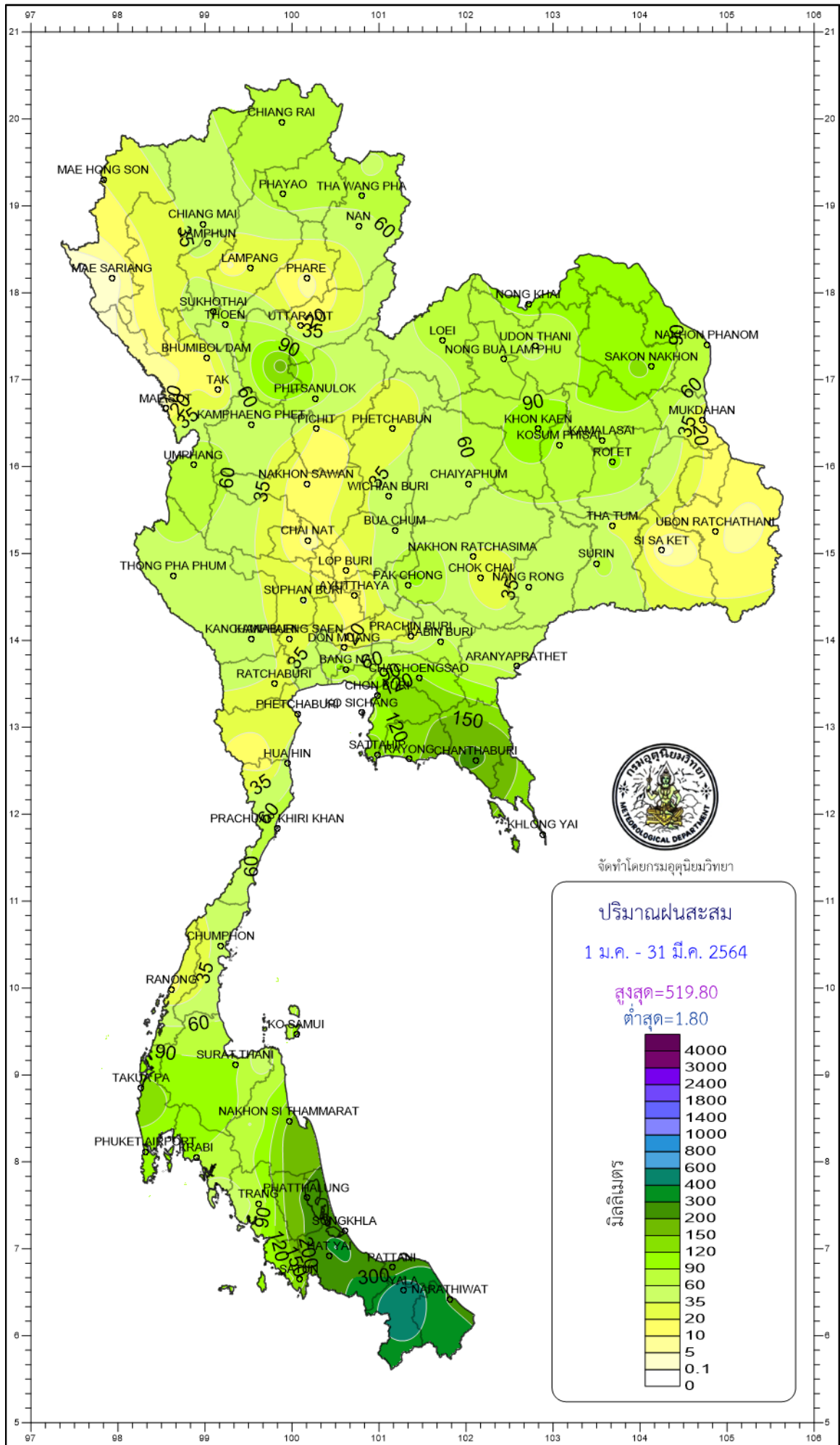
ต่ำสุด=30.30



องศาเซลเซียส

จัดทำโดยกรมอุตุนิยมวิทยา





จัดทำโดยกรมอุตุนิยมวิทยา

